



AUTHORISED DEALER

& Stockist of POLYHOSE



Content

S.No	Product Name	Pg.No
1	Hydraulic Hoses	01
2	Hydraulic Fittings	16
3	Hydraulic Equipments	19
4	Hydraulic Pumps	22
5	Pneumatics	24
6	Seals	27
7	Industrial Valves	31
8	Pipe & Tubes	34
9	Measuring Instruments	35
10	General Consumables	38



Hydraulic Hoses

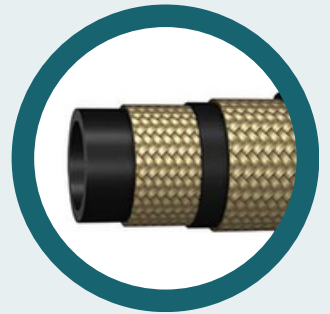


R1 Rubber Hose

Black Color, Synthetic Rubber Resistant to abrasion & weather, oil & ozone, Single Steel Wire braid.

R2 Rubber Hose

Black Color, Synthetic Rubber Resistant to abrasion & weather, oil & ozone, Double Steel Wire braid.

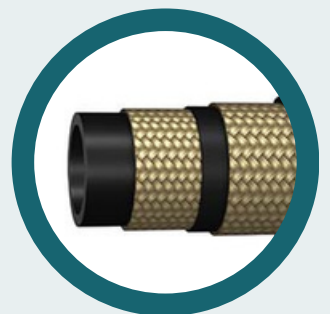


Slim Pilot Rubber Hose

Black Color, Synthetic Rubber Resistant to abrasion & weather, oil & ozone, Single Steel Wire braid.

09 Series Rubber Hose

Black Color, Synthetic Rubber Resistant to abrasion & weather, oil & ozone, Double high tensile Wire braid.





R5 Rubber Hose

Black Color, Synthetic Rubber Resistant to abrasion & weather, oil & water, Single Steel Wire braid of textile fiber.

R5C Rubber Hose

Black Color, Synthetic Rubber Resistant to oil , Single Steel Wire braid , Blue Polyester cover.



R3 Rubber Hose

Black Color, Synthetic Rubber Resistant to oil & water, Double fiber Wire braid.

R6 Rubber Hose

Black Color, Synthetic Rubber Resistant to abrasion & weather, oil & ozone. Textile reinforcement





R12 High Pressure Hose

Black Color, Synthetic Rubber Resistant to abrasion & weather, oil & ozone, Four High Tensile Steel Wire Spirals, 175–280bar.

R13 High Pressure Hose

Black Color, Synthetic Rubber Resistant to abrasion & weather, oil & ozone, Four or Six High Tensile Steel Wire Spirals, 350bar.



R15 High Pressure Hose

Black Color, Synthetic Rubber Resistant to abrasion & weather, oil & ozone, Four or Six High Tensile Steel Wire Spirals, 420bar.

4SP High Pressure Hose

Black Color, Synthetic Rubber Resistant to abrasion & weather, oil & ozone, Four High Tensile Steel Wire Spirals, 165–450bar.





4SH High Pressure Hose

Black Color, Synthetic Rubber Resistant to abrasion & weather, oil & ozone, Four High Tensile Steel Wire Spirals, 250-420bar.

30K Water Blast Hose

Black Color, Synthetic Rubber Resistant to abrasion & weather, oil & ozone, Four High Tensile Steel Wire Spirals.



40K Water Blast Hose

Black Color, Synthetic Rubber Resistant to abrasion & weather, oil & ozone, Four High Tensile Steel Wire Spirals.

45K Water Blast Hose

Black Color, Synthetic Rubber Resistant to abrasion & weather, oil & ozone, Four High Tensile Steel Wire Spirals.



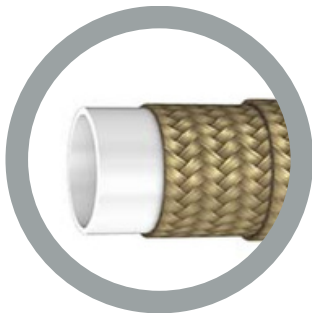


50K Water Blast Hose

Black Color, Synthetic Rubber Resistant to abrasion & weather, oil & ozone, Six High Tensile Steel Wire Spirals.

R1 Thermo Plastic Hose

Black Color, Thermoplastic Elastomer, Single Braids Of Steel Wire, 100-350bars.

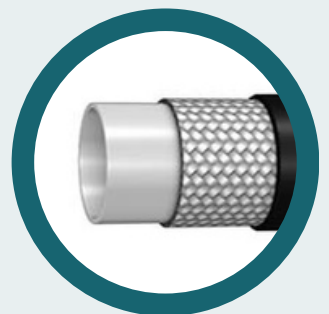


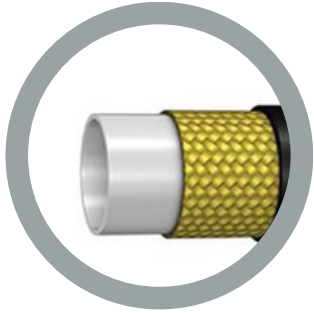
R2 Thermo Plastic Hose

Black Color, Thermoplastic Elastomer, Double Braids Of Steel Wire, 150-450bars.

R7 Thermo Plastic Hose

Black Color, Thermoplastic Elastomer, Double Braids Of Synthetic Fiber, 70-210bars.



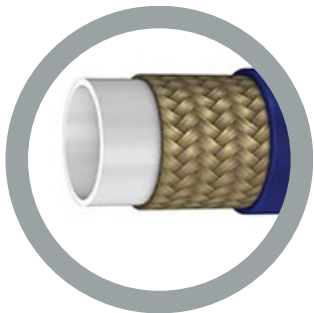
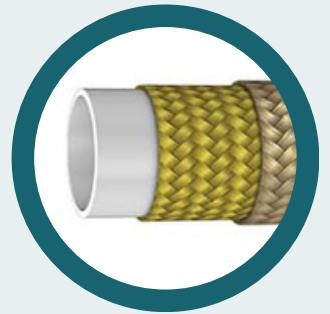


R8 Thermo Plastic Hose

Black Color, Thermoplastic Elastometer, One or more Braids of Aramid Fiber 100-420bars.

Jack Thermo Plastic Hose

Orange Color, Thermoplastic Elastimeter, Two or more Braids of aramid Fiber, 700bar.

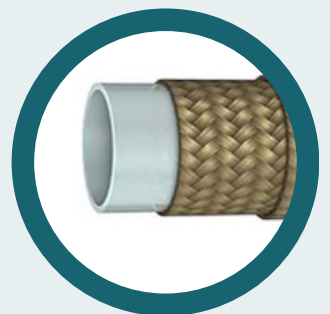


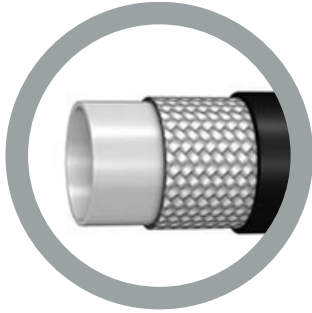
Paint Hose

Blue Color, Polyamide, Double Braids of Steel Wire, 150-450bars.

Green Teflon Paint Hose

Black Color, Synthetic Rubber Resistant to abrasion & weather, oil & ozone, Double Steel Wire braid.



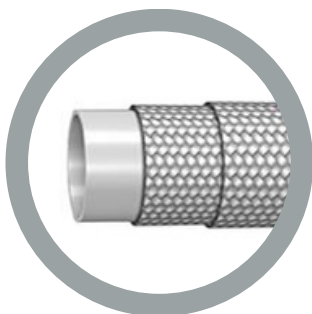


Grease Hose

Black Color, Thermoplastic Elastometer, Single Braid of Synthetic Fiber, Designed for diverse greasing and lubrication etc.

Minimize Hose

Black Color, Synthetic Rubber Resistant to abrasion & weather, oil & ozone, Double Steel Wire braid.

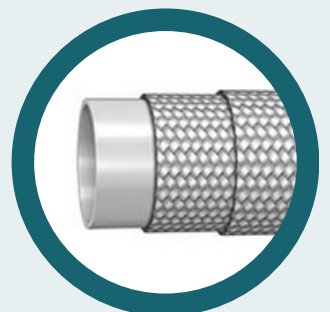


CNG Thermo Plastic Hose

Red Color, Nylon, Two or more Braids of Synthetic fiber, Designed for conveying compressed natural gas etc.

Moisture Block Hose

Black Color, Polyamide(PA11), Single Braid of Steel Wire, Brake filling line.



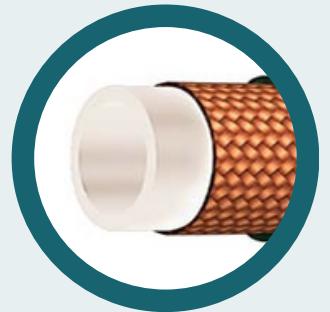


XLPE Chemical Hose

White Color, Synthetic Rubber with XLPE Fiber, abrasion, weather resistant, High Tensile Synthetic Textile Cord..

Carbon Free Chemical Hose

Cream Color, Synthetic rubber, High Tensile Fiber Yarn Braid, Synthetic Rubber cover resistant to oil, water and abrasion.



UHMWPE Chemical Hose

White Color, Synthetic Rubber with transparent UHMPE Fiber, Synthetic Textile Chord with Helical wire, Conveying acids and chemicals.

Tanker Hose

Black with white trips, Hose made from Polypropylene and films, Designed for transferring petroluem.



Hydraulic Hoses



Oil Hose

Blue with white trips, Hose made from Polypropylene and films, Designed for transferring petroluem.

Aviation Fuel Hose

Yellow with white trips, Hose made from Polypropylene and films, Designed for transferring Fuel.



Dock PG Hose

Blue with white trips, Heavy duty PP and fabrics films, Heavy Duty Suction and Discharge of Chemicals.

Oil Dock Hose

Black with white trips, Heavy duty PP and fabrics films, Heavy Duty Suction and Discharge of Chemicals.



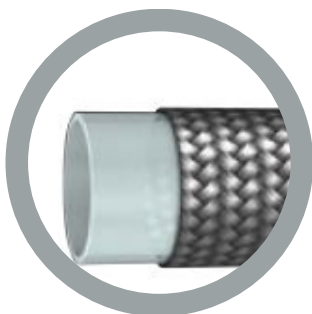
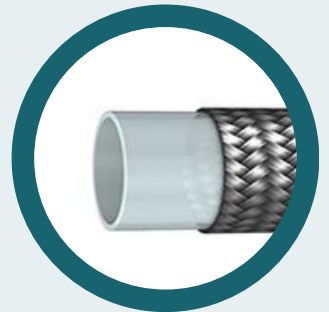


PTFE Teflon Hose 1wire

Sintered tube of polytetrafluoroethylene, Single braid of 304 series of stainless steel wire.

PTFE Teflon Hose 2wire

Sintered tube of polytetrafluoroethylene, Double braid of 304 series of stainless steel wire.

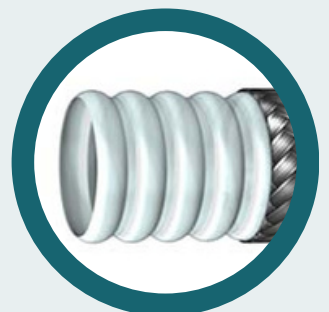


PTFE Gas Teflon Hose 2wire

Special Quantity of Sintered tube of polytetrafluoroethylene, Double braid of 304 series of stainless steel wire.

Convulated Teflon Hose

Helically convoluted Sintered tube of polytetrafluoroethylene, Single braid of 304/316 series of stainless steel wire.



Hydraulic Hoses



Rock Drill Hose

Black Color, Synthetic Rubber Resistant to abrasion & weather, oil & ozone, Single Steel Wire braid.

Steam Hose

Black Color, EDPM rubber resistant to high temperature steam, heat and weather, Double steel wire braids with helical wire.



Oil Suction & Discharge Hose

Black Color, Synthetic Rubber Resistant to abrasion, oil & ozone, Piles of synthetic textile chords.

Water Suction & Discharge Hose

Black Color, Synthetic Rubber Resistant to abrasion, oil & ozone, Piles of synthetic textile chords.





Cement Feeding & Discharge Hose

**Black Color, Synthetic and natural Rubber
Resistant to abrasion & weather, oil & ozone,
High Tensile Synthetic Texile cord.**

Sand Blasting Hose

**Black Color, Synthetic and natural Rubber
Resistant to abrasion & weather, oil & ozone,
High Tensile Synthetic Texile cord.**



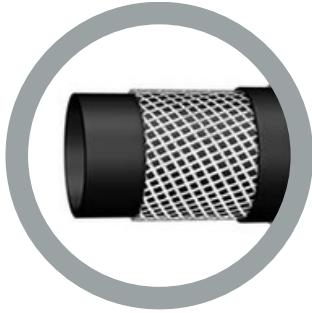
Brake Hose

**Black Color, Synthetic Rubber tube , Textile
reinforcement, Automotive Air Brake System
etc.**

Pneumatic Tool Hose

**Black Color, Plasticized PVC, Double Braid of
Synthetic Fiber, Designed for various
industrial amchinery etc.**





Super Spray Hose

Black Color, Plasticized PVC, Double Braid of Synthetic Fiber, Designed for spraying various pesticides etc.

Welding Hose

Black Color, Plasticized PVC, Single Braid of Synthetic Fiber, Designed for welding and cutting equipments.

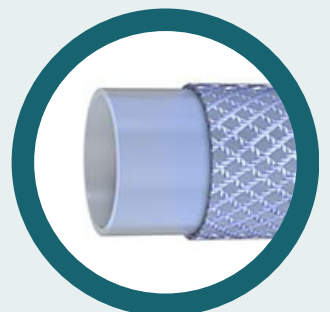


Air / Water Hose

Black Color, Plasticized PVC, Single Braid of Synthetic Fiber, Designed for light engineering industry etc.

PVC Braided Hose

Transparent, Plasticized PVC, Single Braid of Synthetic Fiber, Factory water supply and drainage equipment etc.



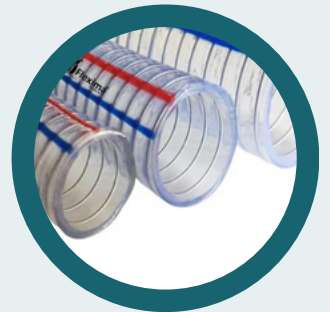


Multipurpose Hose

Black Color, Plasticized PVC, Single Braid of Synthetic Fiber, Designed for spraying pesticides etc.

Thunder Hose

Black Color, Synthetic Rubber Resistant to abrasion & weather, oil & ozone, Double Steel Wire braid.



Silicon Hose

Black Color, Synthetic Rubber Resistant to abrasion & weather, oil & ozone, Single Steel Wire braid.

PU Duct Hose

Black Color, Synthetic Rubber Resistant to abrasion & weather, oil & ozone, Double Steel Wire braid.



Hydraulic Hoses



Green Suction Hose

Black Color, Synthetic Rubber Resistant to abrasion & weather, oil & ozone, Single Steel Wire braid.

SS Below Hose

Black Color, Synthetic Rubber Resistant to abrasion & weather, oil & ozone, Double Steel Wire braid.





Hydraulic Hex Nipples and Fittings

Material : MS
End Connection Type : Threaded
Usage/Application : HYDRAULIC
Thickness : SCH 80

Hydraulic Crimp Fittings

Connection: 1 and 2 Threaded
Max pressure : 630
handle at 20 °C (68 °F).



SAE Flanges

Available : ST 52.3
Plating : Chrome , Trivalent, Hexavalent, Zinc, Nickel.

Pipe Clamps

Available: Standard, Double, Multiple, Light, Heavy & Super Heavy
Sizes: 6mm - 4inches





Pipe Fittings

Usage/Application: WATER PIPE
End Connection Type: Buttweld
Fitting Type: BUTT WELD FITTINGS.

Testing coupling & Hoses

Color: Black
Pressure: 10000PSI
Usage/Application: Wire Fitting



Hose IC Fittings

Standard: 304
Size: 3/4"

Tube Fittings

Material Grade: SS / CS / AS / ETC
Type: Compression Tube Fittings
Usage/Application: TUBE FITTINGS





Brass Fittings

Usage/Application: Industrial
Size: 1/8" TO 1"

Quick Release Coupler

Size : 1/4" to 2"
Working Pressure : Up to 950 Bars
Connection Thread Type: Threaded
BSP, Threaded NPT



SS Fittings

Grade: SS 304, SS 316
Make: TRYCHEM METAL AND ALLOYS
Types: Elbow, Tee, Cross Tee, Hex Nipple,
Reducer, Union, Cap, Socket, Coupling,



Hydraulic Equipments



Hydraulic Floor Jack

Excellent Choice for maintenance , positioning bending, pressing and production applications.
Capacity: 2-500 tonnes.

Hydraulic Bottle Jack

Excellent Choice for maintenance , positioning bending, pressing and production applications.
Capacity: 2-500 tonnes.



Hydraulic Powerpack

Aluminium Gear Pumps / Cast Iron Gear pumps. Pressure : 400bar

Hydraulic Hand Operated Pumps

Excellent Choice for maintenance , positioning bending, pressing and production applications.
Capacity: 2-500 tonnes.



Hydraulic Equipments



Hydraulic Filters

Type:Sub Plate, Flow Capacity: 40lpm, Filtration: 22microns

Hydraulic Cylinders

Type:Sub Plate, Flow Capacity: 40lpm, Filtration: 22microns



Crimping Machine

ideal for crimping hydraulic hoses up to 2" six spirals and up to 3" industrial hose.

Hose Protective Sleeves

Resistance to diesel, transmission fluid, engine oil and coolant

0.9-inch (2.3mm) thickness

Working temperature range: -40°F to 257°F (-40°C to 125°C)



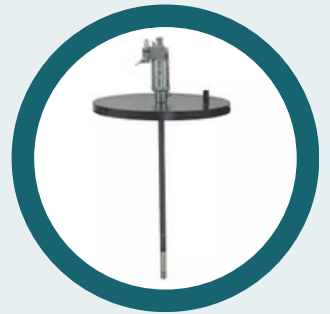


Hand Operated Grease Dispensers

Kg: 3, 5, 10, 20
PSI: 2200
GMS/ST: 4
Hose: 2 meters

Pneumatic Barrel Oil Pump

Kg: 205
Type: Pneumatic
PSI: 8500
Hose: 2 meters



Axle Stand

Ton: 2, 3, 6, 12, 22

Foam Sprayer

Ltr: 50
Type: Pneumatic
Pressure: 6-8 kg/cm
Hose: 10 meters





Whip Check Arrestor

Material: Mild Steel

Color: Silver

Product Type: Safety Whip Checks

Application: Hydraulic Hose/ Air Hose

Hydraulic Cylinders

Capacity: 5-10 ton, **Material:** Mild Steel, **Power Source:** Hydraulic, **High Pressure:** 2-14 inch



Spiral Sleeves

Color: Multicolor, **Type:** Flexible, **Size**

3/16" to 2", Usage/Application:

used in excavators, loaders, road rollers, pavers, forklifts, cranes, dump trucks etc.



Hydraulic Pumps

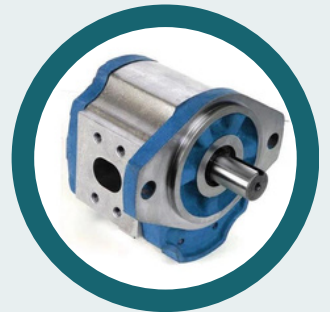


Vane Pumps

Single Vane Pumps-Fixed Displacement,
Max-Speed:2500-3600,

Gear Pumps

Type: Flangr/Threaded
Flow capacity: 1.2-227LPM
Pressure Range: 0-200 Bsr

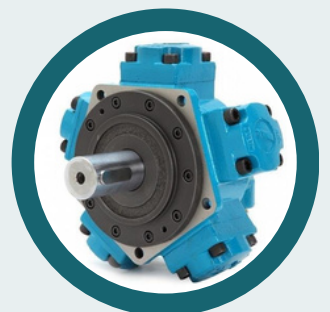


Hand Pumps

Type: Hydraulic Power Units, 2-Stage
Hydraulics: Automatic 2-Speed Function,
Usable Oil Capacity: 700cc, Operate Type:
Hand-Operated

Radial Piston Pumps

High efficiency
High pressure (up to 1,000 bar or 14000psi)
High reliability



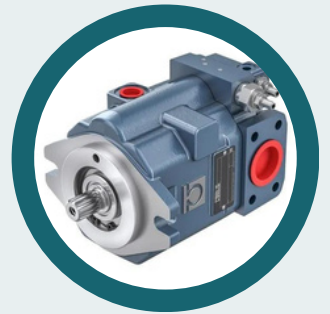


High Pressure Vane Pumps

Double Vane Pumps-Fixed Displacement,
Max-Speed:2500 - 3600,

Axial Piston Pumps

Swash Plate design for open loop application
Max-working bar: 280bar
Controls:Pressure, Flow & Power





Pneumatic Hoses

Type: Air hose
unit Length: 200
Nominal Size: 4mm

One Touch Fittings

Pressure Range: 10 Barg
Applicable Tubing OD:
4mm/6mm/8mm/10mm/12mm



Pneumatic Fittings

Fitting Type: Connectors,elbow,tee, union
Size: 1/4 inch-1 inch

Pneumatic Tools

Include buffers, nailing and stapling guns,
grinders, drills, jack hammers, chipping
hammers, riveting guns, sanders and
wrenches





FRL Unit

Brand: Festo, Janatics, SMC, Dynamic
Material: Aluminum
Size: 1/8" 1/4" 3/8" 1/2" 3/4" 1" 1.5" 2"

Air Filter Regulators

Filter Precision: 20um or 5um
Material: Stainless Steel



Pneumatic Cylinders

Max Pressure: 7 kg
Shaft Diameter(mm): 4 mm to 63 mm
Type: Hydro Pneumatic, Double acting

Manifold

Maximum inlet: 3000 PSIG
Maximum Temperature Range: 140 Deg F
Minimum Temperature Range: 0 Deg F





Hand Lever Valves

Ambient Temperature: 60 Degrees C
Materials of Construction: Aluminum
Medium: Compressed Air

Solenoid Valves

Max Viscosity: 5 deg E (~37cST vey a mm 2/s)
Operating Temperature: -10 deg C / +160 deg C
Position: Normally Closed, normally open



Lubrication Fittings

Type: PIPE FITTINGS

Lubrication & Nylon Tubes

Material: Nylon Tubes
Size: 1/2 inch-1 inch, 1/4 inch-1/2 inch





Piston Seals

Usage/Application: Hydraulic cylinder seal

Oil seals

Hardness: 80A
Thickness: 5-30mm



Viton O Ring

Size: 10 * 5
Color: black
Material: Viton

Shaft Seals

Material: Metal
Color: Red, Orange, Yellow, Green
Hardness (shore): 20-90





Hydraulic seals

Material: PU

Outer Diameter: Upto 110 mm

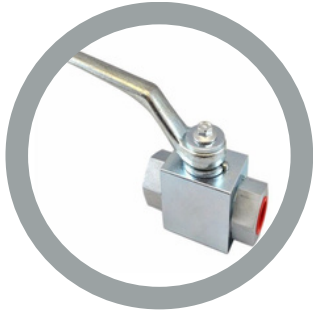
Pneumatic seals

Application: Pneumatic

Speed: 1 m/s

Temperature range: 35 to 80





High Pressure Ball Valves

2-way and Mutliway Ball valves
Working pressure range-400,500,630,840 and 1500 bar.

Cylinders Valve

Usage/Application: Co2 gas
Weight: 700g



Monoblock Valves

Fluid Temperature Range: -30 to 80 Deg C
Hysteresis: Less Than 6%
Nominal Flow: 30 l/min

Gate Valves

Stainless Steel
Size: 8-600mm



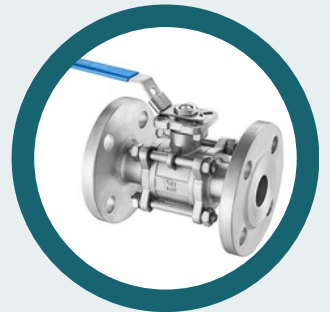


Ball Valves - Screwed End

Way: 2 Way
Brand: VTC
Range: 1/4" to 12"

Ball Valves - Flange End

Medium Temperature: -20 to +180 degree C
Pressure: 80 Bar
End Connection: Flanged



Butterfly Valves

Material : CI,SS,PP
Seating: Teflon,EPDM, Nitrile
Size: 1" - 12"

Pneumatic Rotary Actuator Valves

Working Pressure: 200 psi
Usage/Application: ALL IN ONE
Material: Stainless Steel



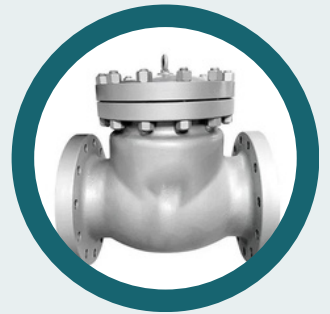


Wafer Type Check Valves

Port Size: 1/2"~12"
Grade: ANSI 150, DIN PN 10 & PN16
Surface Finishing: Polished

Non Return Valves

Stainless Steel
Size: 8-600mm



Strainers

Model Name/Numb: MS T TYPE STRAINER
End Connection: Flange End
Material: Mild Steel



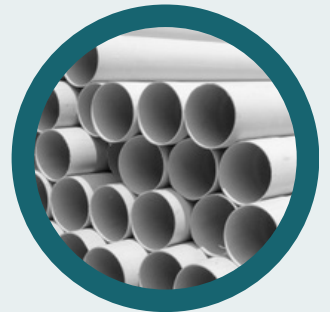


Hydraulic Seamless Pipe

Nominal Size: 3/4", 1", 1.50", 2", 1/2"
Length: 100m, 3m, 6m, 30m
Material: Stainless Steel

PVC / CPVC / UPVC Pipes

Material: CPVC / PVC / UPVC
Usage/ Application: Hot Water



MS/SS Pipes

Nominal Bore: 15-1500 mm
Thickness: 3-12 mm
Usage/Application: Construction, Industrial, etc





Pressure & Temperature Gauge

Temperature Range: -80...800 Deg C
Size: 100, 150, 250 MM

Oil Level Indicator

Petroleum and Mineral Based
Available in metric and inch degree c
maxx-temperature : 80 Degree C

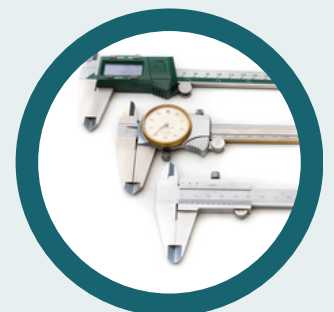


Vernier Calipers

Range: 0 to 150 mm, 0 to 200 mm
Least Count: 0.02mm / 0.001 "
Size/Dimension: 20 Inch

Digital Vernier Calipers

Measuring Range: custom
Display Type: Digital





Height Gauge

Display: Digital
Range: 0-1000 MM
Type: Digital

Outside Micrometer

Brand: Insize
Graduation: 0.001 mm
Type: Micrometer

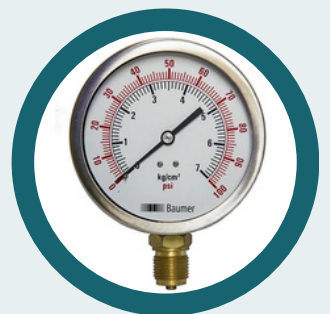


Magnetic Stand

Base Dimension: 58 x 50 x 55 mm
Branch Stem: 10x160mm

Pressure Gauge

Size : 40, 50, 63, 80, 100, 160, and 250 mm



Measuring Instruments



Clamp Meter

Display Type: Analog / Digital
Jaw Opening : Up to 50mm/2.0 inch
Weight: 533g

Multimeter

Type : Analog / Digital



General Consumables



Fasteners

**Threaded Fasteners, Nuts,
Washers, Rivets**

Safety Items

**Eye Protection , Hear Protection, Head
Protection, Hand Protection, Foot Protection
etc**



Power Tools

**Drilling Machines, Jack Hammers , Heat Guns,
Chainsaw etc**

Hand Tools

**Hammers, Screwdrivers, Wrenches, Pliers,
Handsaw etc**





Tapes

Anti Skid Tapes , Double Sided Tapes, Drywall Tapes, Edge Banding Tapes, Electrical Insulation Tapes, Masking Tapes, Packaging Tapes etc

Bearings

Shape: Round, Thickness: 36 mm, Material: Stainless Steel, Application: Industry, Bore Size: 10-80 mm



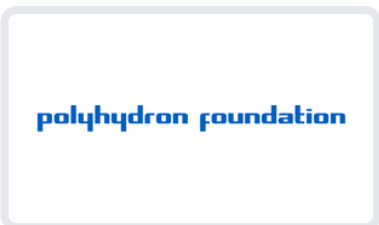
Paints

Usage/Application: Industrial, Color: Multi, Packaging Type: Bucket



Polyhose[®] (Authorized Dealer)

Providing Flexible Solutions Globally



Brands

WIKAI

YUKEN

DOWTY

TATA

JSW

VENUS
High Protection | Best Comfort | Great Value |

STANLEY

BOSCH

APL
- for those who want the best

TAPARIA

CAT
CATERPILLAR

ashirvad

penta

INFINITE HYDRAULICS SOLUTIONS

33AAJFI9385D1Z6



www.infinitehydraulics.in



Sales@Infinitehydraulics.in



+91 8939801621



Old No 2, New No 3, Jones Street
Ground Floor, Mannady, Chennai-1